

# SEMP feedback

## *Survey report*

## Introduction

The survey presented here has been conducted between the 09/11/2020 and the 07/12/2020. by Erasmus Student Network Switzerland. The survey was disseminated on the official communication channels of the 14 sections of the Swiss network. Respondents answered on a voluntary basis.

## Goal

The goal of this survey and its subsequent report is to present feedback on the Swiss-European Mobility Programme (SEMP) to Movetia, from the point of view of the participants.

## Respondents

There were 77 answers to the questionnaire, which makes it significant on a global scale (N>50). However, questions that apply to a reduced subset of respondents must be considered with caution, as the considered subset may not be statistically significant.

## Year of mobility

The two main groups of population who answered the questionnaire are the students **currently** in mobility in Switzerland and the ESN staff, who were on mobility in the past. This leads to an unbalanced year distribution.

Table 1 - Answers per year of mobility

Year of mobility	Incoming	Outgoing	Total
------------------	----------	----------	-------

2020	45	4	48
2019	3	11	14
2018	0	3	4
2017	0	2	2
2016	0	3	3

## Incoming students

There were 50 answers from incoming students. We defined incoming students as students who stated that their destination university was in Switzerland.

**Table 2 - Destination HEI of incoming students**

HEI (incoming)	Answers	HEI (incoming)	Answers
UNIL	20	Universität Zürich	4
ZHAW	7	Université de Neuchâtel	2
EPFL	6	ETH Zürich	2
Universität Basel	6	Hochschule Luzern	1

## Outgoing students

There were 23 answers from outgoing students. We defined outgoing students as people who stated that their home university was in Switzerland.

**Table 3 - Home HEI of outgoing students**

HEI (outgoing)	Answers
Université de Neuchâtel	9

Université de Genève	3
EPFL	3
Universität Basel	2
UNIL	2
Haute Ecole de Gestion	1
HEP Fribourg	1
Fachhochschule Graubünden	1
ETH Zürich	1

## Results analysis

### Questions related to Erasmus Charter for Higher Education

The survey contained 17 questions to evaluate the compliance of the partner institutions with the Erasmus Charter for Higher Education (ECHE). There is one question for each point addressed in the ECHE guidelines. Answers to the questions had to be chosen among: *very well*, *well*, *somewhat*, *not at all* and *no opinion*.

We grouped the positive (*well* and *very well*) and the negative (*somewhat* and *not at all*) answers to compare the performance of Swiss institutions to their partners abroad on each aspect.

#### Where Swiss HEIs are doing better than their partners:

- **no fees:** 83% of incoming students have paid no extra fees for their mobility compared to only 58% of outgoing.
- **learning agreement:** 74% of Swiss students had their Learning Agreement validated in advance (vs. 66%).

- **accommodation help:** Swiss HEIs satisfy 68% of their incoming students with the assistance they received provide for finding accomodation, whereas 58% of our students abroad are satisfied on that matter.
- **course recognition,** 84% of Swiss students got credit recognition for courses stated in the learning agreement.
- **reintegration,** 42% of incoming students received adequate support in the reintegration and valorisation of their experience abroad. 17% of incoming students are satisfied with this aspect but most of them have no opinion.

#### Where Swiss HEIs still have to improve:

- **discrimination:** 84% outgoing have enjoyed equal opportunities while 73% of incoming students say so.
- **general recognition:** 90% out outgoing students say they received a full recognition of their academic work while only 78% of incoming students say the same.
- **course catalogue:** 74% of outgoing students found a up-to-date course catalogue on their destination university website (vs. 61% of incoming students).
- **language:** 58% of outgoing students have been checked for having the required language skills before going on mobility, while this is the case for 76% of incoming students.
- **visa help:** 20% of incoming received help vs. 10% of outgoing (not relevant for SEMP).
- **insurance help:** 26% of outgoing students complain about not having received assistance related to obtaining insurance, only 5% did. European numbers are 35%/35%.

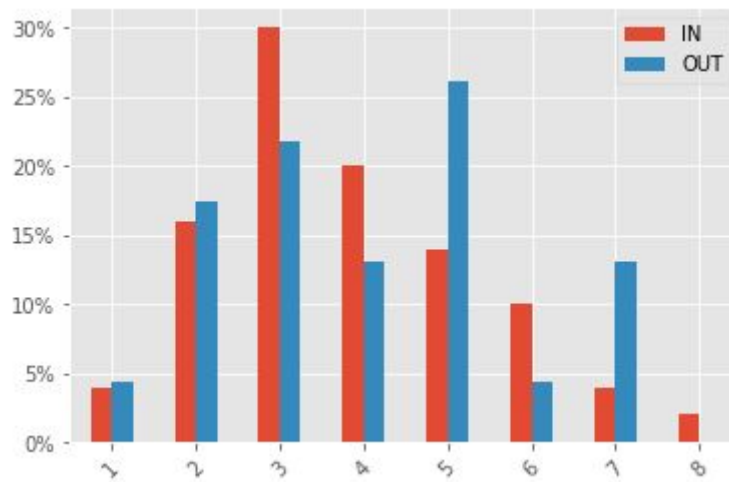
- **integration:** 71% of incoming students are satisfied about their integration into their host university in Switzerland, while 90% of our students abroad are well-integrated.
- **mentoring:** 90% of outgoing students received appropriate mentoring and support arrangement during their mobility, while only 66% of incoming students say the same.
- **linguistic help:** only 46% of incoming students are satisfied with the linguistic help they received! 84% of our students abroad received appropriate linguistic support.
- **transcript:** 79% of outgoing students obtained an accurate transcript from their host university. Most incoming students have no opinion on that matter.

#### Same in Europe and Switzerland:

- **responsibilities:** both incoming and outgoing students claim agreements were signed and responsibilities between home and host were well defined.
- **equal academic treatment:** everyone is satisfied about their academic treatment.

#### Questions related to financial coverage

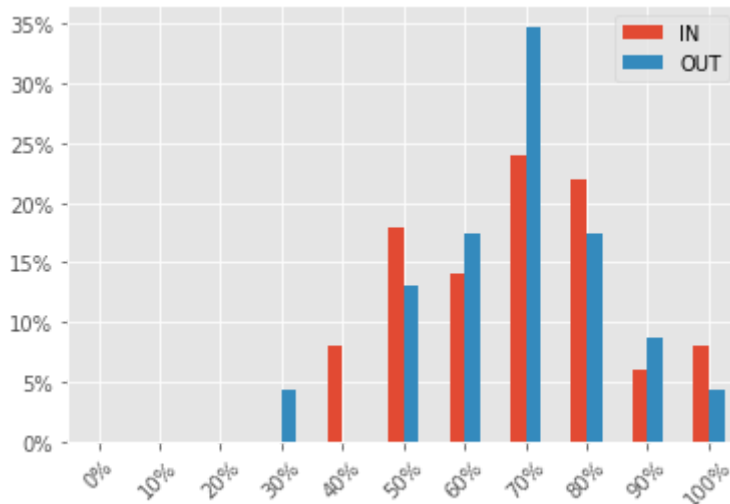
- **Actual financial coverage:** we asked respondents to rate their financial coverage on a scale from 1 to 8, where 1 means *The grant didn't cover my expenses at all, not even the food* to 8, meaning *The grant covered all my expenses*.

**Figure 1 - Evaluation of financial coverage**

The results show a peak at 3 for incoming students and a peak at 5 for outgoing students, showing that outgoing students are mildly satisfied with the financial aid they receive, whereas incoming students are rather dissatisfied. This trend can be easily explained by the cost of life in Switzerland being on average higher than elsewhere in Europe.

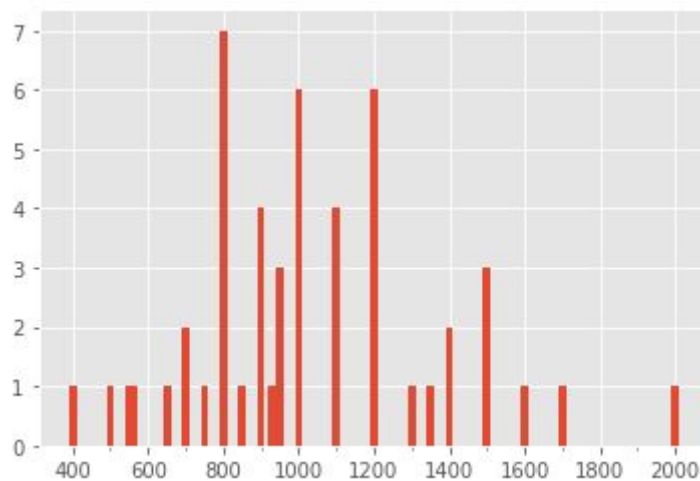
- **Ideal financial coverage:** both incoming and outgoing students agreed that the grant should cover about 70% of their mobility expenses.

**Figure 2 - Ideal financial coverage**



Looking at mobility students in Switzerland, one can see that the total monthly expenses vary between CHF800 and CHF1'200. A grant that would cover 70% of these expenses would then consist of an amount of around CHF700 per month.

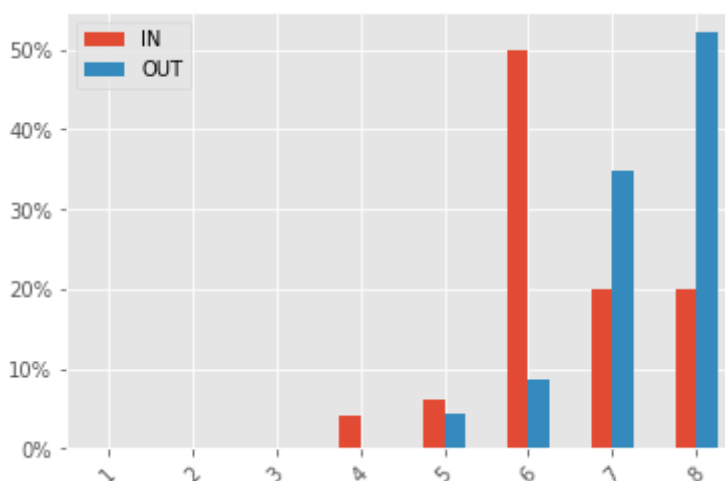
**Figure 3 - Monthly expenses for incoming students**



## Questions related to students perception

- **Judgement of the mobility itself:** We asked the participants how much they liked their mobility on a scale from 1 to 8, 1 corresponding to *It was horrible, I was wishing to go home all day long* and 8 corresponding to *It was the best semester/year of my life*.

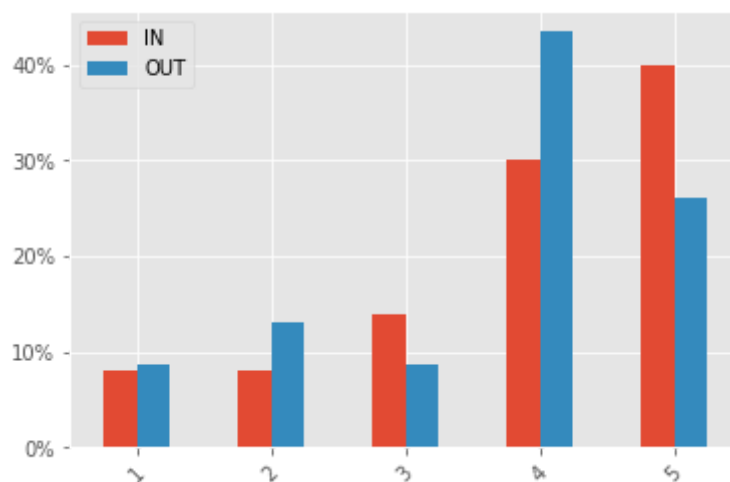
Figure 4 - Evaluation of mobility experience



At first glance, we see that everyone enjoyed their mobility period. However, we can still observe that over 50% of incoming students responded 6 over 8, whereas more than the half of outgoing students clearly stated that it was the best semester or year of their life. One should keep in mind that most incoming students went on mobility in 2020, whereas most outgoing respondents went abroad in the previous years. The COVID-19 pandemic and the successive lockdowns may well be responsible for this result.



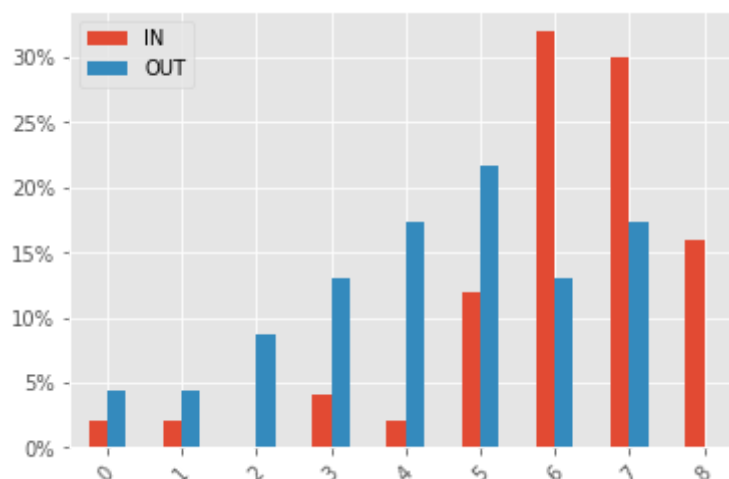
- Choices:** We asked the participants if they were overall satisfied with the extent of choices they had for their destination. They were asked to rate it from 1 to 5, 1 meaning *I wish I had more options* and 5 meaning *I was able to identify several destinations that I liked*. For outgoing students, we would have liked to split the results in HEI categories: university, university of applied sciences and university of teaching education. However, the number of respondents for the two last categories were not large enough to be statistically significant (respectively 2 and 1). One can still note informally that the person from HEP Fribourg rated the choice extent 1/5.



The results for outgoing students can therefore be considered as being representative of what students at Swiss universities and ETH/EPF think of their choice extent. We still note that most outgoing students rated their choice extent 4/5 versus 5/5 for incoming students. If this trend is confirmed with further studies, it can be imputed to the non-participation of Switzerland in the Erasmus programme.

- Procedure ease:** Participants were asked to rate the ease of the procedure for going on mobility on a scale from 0 to 8, 0 meaning *It was extremely long and hard to obtain a confirmation that my mobility could take place* and 8 meaning *It was very quick and easy to obtain a confirmation that my mobility could take place*.

Figure 5 - Evaluation of the ease of the procedure



The respondents are globally satisfied with the procedure to go on mobility, either on the Swiss side or among the incoming students. The procedure being very dependent on the home university, no conclusion can be made on the difference between the outgoing and incoming peaks.

## Conclusions

Even though a detailed dive into the subgroups of respondents was not possible due to the low number of responses and the mobility year distributions for incoming and outgoing students being not comparable, some interesting trends emerged.

Financially speaking, incoming students struggle with the grant that they currently receive. They would need around CHF 700 per month to cover a reasonable amount of their expenses. On the other side, outgoing students are more positive about the financial support they receive. In order to achieve an equal perception of satisfaction of the incoming and outgoing students, it seems that the grant amount should vary between these two categories.

To further extend the list of disadvantages of a non-association to the Erasmus programme, it has been observed that outgoing students are globally less satisfied about the extent of their destination choices than incoming students.

## References

- European Commission, Directorate-General for Education Youth, Sport and Culture, *Erasmus Charter for Higher Education 2014-2020*, Brussels, 2020 ([https://ec.europa.eu/programmes/erasmus-plus/sites/default/files/files/resources/he-charter\\_en.pdf](https://ec.europa.eu/programmes/erasmus-plus/sites/default/files/files/resources/he-charter_en.pdf))

## Annexes

The list of origin universities of the incoming respondent can be found here, as well as the list of destinations for the outgoing respondents.

**Table 4 - Home HEI of incoming respondents**

Home university	City	Country	Number of answers
Chalmers University of Technology	Göteborg	SE	1
Colegio Universitario de Estudios Financieros	Madrid	ES	1
Eberhard-Karls-Universität Tübingen	Tübingen	DE	1
Freie Universität Berlin	Berlin	DE	1

Friedrich-Alexander-Universität Erlangen-Nürnberg	Nürnberg	DE	1
Georg-August Universität Göttingen	Göttingen	DE	2
Global University of O. P. Jindal	Sonipat	IN	1
Goethe University Frankfurt	Frankfurt	DE	1
Grenoble INP - Génie industriel	Grenoble	FR	1
Haute Ecole de Gestion	Genève	CH	1
Humboldt Universität zu Berlin	Berlin	DE	1
Imperial College London	London	UK	1
Instituto Superior Técnico	Lisboa	PT	1
KU Leuven	Leuven	BE	1
Karlsruhe Institute of Technology	Karlsruhe	DE	1
Katholische Universität Eichstätt-Ingolstadt	Ingolstadt	DE	1
Leuphana Universität Lüneburg	Lüneburg	DE	1
RWTH Aachen University	Aachen	DE	1
Sciences Po Bordeaux	Bordeaux	FR	1
Scuola Normale Superiore di Pisa	Pisa	IT	1
TU Darmstadt	Darmstadt	DE	1
Universidad Carlos III	Madrid	ES	2
Universidade Presbiteriana Mackenzie	São Paulo	BR	1
Universitat Pompeu Fabra	Barcelona	ES	3
University of Applied Arts Vienna	Wien	AT	1

University of Bologna	Bologna	IT	2
University of Lisbon	Lisboa	PT	1
University of Porto	Porto	PT	1
University of Rome La Sapienza	Rome	IT	1
Universität Bonn	Bonn	DE	1
Universität Düsseldorf	Düsseldorf	DE	1
Universität Hamburg	Hamburg	DE	2
Universität Heidelberg	Heidelberg	DE	2
Universität Münster	Münster	DE	2
Universität Osnabrück	Osnabrück	DE	1
Universität Stuttgart	Stuttgart	DE	2
Universität zu Köln	Köln	DE	1
Université libre de Bruxelles	Bruxelles	BE	1
Vysoká škola ekonomická v Praze	Praha	CZ	2

Table 5 - Destination HEIs for outgoing respondents

Destination university	City	Country	Number of answers
Aalto University	Aalto	FI	1
Danmarks Tekniske Universitet	København	DK	1
Freie Universität Berlin	Berlin	DE	1
Imperial College London	London	UK	1

Karls- Ruprecht Universität	Heidelberg	DE	1
Leeds Beckett University	Leeds	UK	1
PH Heidelberg	Heidelberg	DE	1
Ruprechts-Karls-Universität Heidelberg	Düsseldorf	DE	1
Stockholm University	Stockholm	SE	1
UKC Canterbury England	Canterbury	UK	1
Universidad Pontificia de Comillas	Madrid	ES	1
Universidade de Coimbra	Coimbra	PT	1
University of Copenhagen	København	DK	2
University of Düsseldorf	Düsseldorf	DE	1
University of Helsinki	Helsinki	FI	1
Università di Genova	Genova	IT	1
Universität Bielefeld	Bielefeld	DE	1
Universität Heidelberg	Heidelberg	DE	1
Universität Leipzig	Leipzig	DE	1
Universitat de València	Valencia	ES	1
Yonsei University	Seoul	KR	1
ZHAW	Winterthur	CH	1